

Test Report

Number : TWNC00141548

Applicant 申請商: Homytech Co., Ltd.
No 117 Yongsing St
Bade City Taoyuan county 33456
Taiwan R.O.C.

Date : Dec 09, 2009

Sample Description 樣品敘述:

One (1) group of submitted samples said to be :

以下測試樣品乃供應商所提供及確認:

Sample Description : 石墨粉

樣品名稱

Supplier's Name : 泓明

供應商名稱

Date Sample Received : Dec 04, 2009

收件日期

Date Test Started : Dec 07, 2009

開始測試日期

Test Conducted 測試執行 :

As requested by the applicant, for details please refer to attached pages.
依申請商之要求 , 細節請參考附頁 .

Authorized By:

On Behalf Of Intertek Testing Services
Taiwan Limited



K. Y. Liang
Director

This report shall not be reproduced
except in full, without the written
approval of the laboratory.

Intertek Testing Services Taiwan Ltd.

8F., No. 423, Ruiguang Rd., Neihu District, Taipei 11492, Taiwan, R.O.C.

全國公證檢驗股份有限公司

11492台北市內湖區瑞光路423號8樓

Tel: (+886-2) 6602-2888 · 2797-8885 Fax: (+886-2) 6602-2410

Attention is drawn to the terms and conditions printed overleaf.

Number : TWNC00141548

Test Conducted

(I) Test Result Summary 測試結果 :

Testing Item 測試項目	Result 結果 (ppm)
	Black Powder
Heavy Metal / 重金屬	
Cadmium (Cd) content / 鎘含量	ND
Lead (Pb) content / 鉛含量	ND
Mercury (Hg) content / 汞含量	ND
Chromium VI (Cr ⁶⁺) content / 六價鉻含量	ND
Halogen Content / 鹵素含量	
Chlorine (Cl) / 氯	194
Bromine (Br) / 溴	ND

Remarks: ppm = parts per million based on weight of tested sample = mg/kg

備註 = 百萬分之一, 依據測試樣品重量計算

ND = Not Detected = 未檢測出

Responsibility Of Chemist 分析人員 : Irene Chiou / Kevin Liu / Cathy Chen

Date Sample Received 樣品收件日期 : Dec 04, 2009

Testing Period 樣品測試期間 : Dec 07, 2009 To Dec 08, 2009

(II) RoHS Requirement 限值:

Restricted Substances 限用物質	Limits 限值
Cadmium (Cd) content / 鎘含量	0.01% (100ppm)
Lead (Pb) content / 鉛含量	0.1% (1000ppm)
Mercury (Hg) content / 汞含量	0.1% (1000ppm)
Chromium VI (Cr ⁶⁺) content / 六價鉻含量	0.1% (1000ppm)

The above limits were quoted from 2002/95/EC and amendment 2005/618/EC for homogeneous material.

本限值是依據歐盟指令 2002/95/EC 與其更新指令 2005/618/EC 針對均質材質所訂定。

Number : TWNC00141548

Test Conducted

(III) Test Method 測試方法:

Testing Item 測試項目	Testing Method 測試方法	Reporting Limit 報告極限
Cadmium (Cd) content 鎘含量	With reference to IEC 62321 edition 1.0:2008 in clause 8/9/10, by microwave digestion until the tested samples are totally dissolved and determined by ICP-OES. 參考IEC 62321, 2008年第一版第8/9/10章, 以微波消化法測試樣品直到樣品完全溶解並用感應耦合電漿原子放射光譜儀分析。	2 ppm
Lead (Pb) content 鉛含量	With reference to IEC 62321 edition 1.0:2008 in clause 8/9/10, by microwave digestion until the tested samples are totally dissolved and determined by ICP-OES. 參考IEC 62321, 2008年第一版第8/9/10章, 以微波消化法測試樣品直到樣品完全溶解並用感應耦合電漿原子放射光譜儀分析。	2 ppm
Mercury (Hg) content 汞含量	With reference to IEC 62321 edition 1.0:2008 in clause 7, by microwave digestion until the tested samples are totally dissolved and determined by ICP-OES. 參考IEC 62321, 2008年第一版第7章, 以微波消化法測試樣品直到樣品完全溶解並用感應耦合電漿原子放射光譜儀分析。	2 ppm
Chromium VI (Cr ⁶⁺) content 六價鉻含量	With reference to IEC 62321 edition 1.0:2008 in annex C, by alkaline digestion and determined by UV-Vis spectrophotometer. 參考IEC 62321, 2008年第一版附錄C, 以鹼液消化並用紫外光-可見光分光光度計分析。	1 ppm
Halogen Content 鹵素含量	With reference to EN 14582:2007 by combustion flask with oxygen and determined by ion chromatography 參考EN 14582:2007, 以氧氣燃燒瓶燃燒集氣法並用離子層析儀分析。	50 ppm

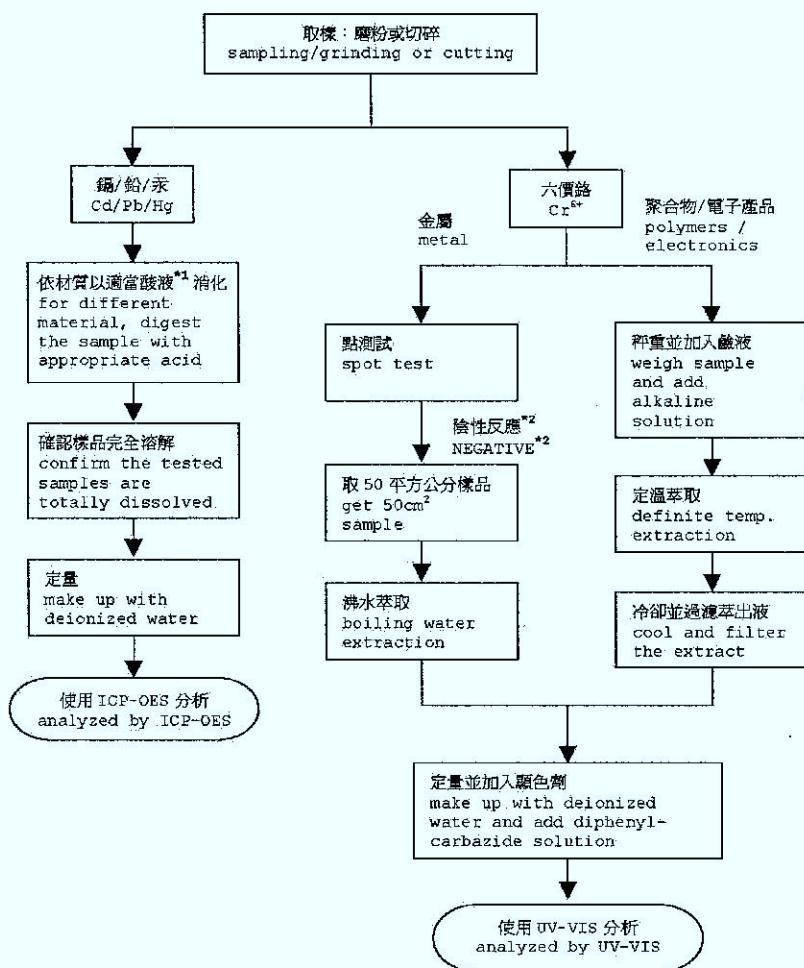
Remark: Reporting Limit = Quantitation limit of analyte in sample
備註 報告極限 = 測試樣品之定量偵測極限

Test Conducted

(IV) Measurement Flowchart 測試流程圖:

Test For Cd/Pb/Hg/Chromium (VI) RoHS四項測試流程圖

Reference Standard 參考方法: IEC 62321 edition 1.0:2008



Remarks 備註:

*1: List Of Appropriate Acid 各材質添加酸液如下表:

Material 樣品材質	Acid Added For Digestion 添加酸液種類
Polymers / 聚合物	HNO ₃ , HCl, HF, H ₂ O ₂ , H ₃ BO ₃ 硝酸、鹽酸、氫氟酸、雙氧水、硼酸
Metals / 金屬	HNO ₃ , HCl, HF 硝酸、鹽酸、氫氟酸
Electronics / 電子產品	HNO ₃ , HCl, H ₂ O ₂ , HBF ₄ 硝酸、鹽酸、雙氧水、氟硼酸

*2: If the result of spot test is positive, Chromium VI would be determined as detected.

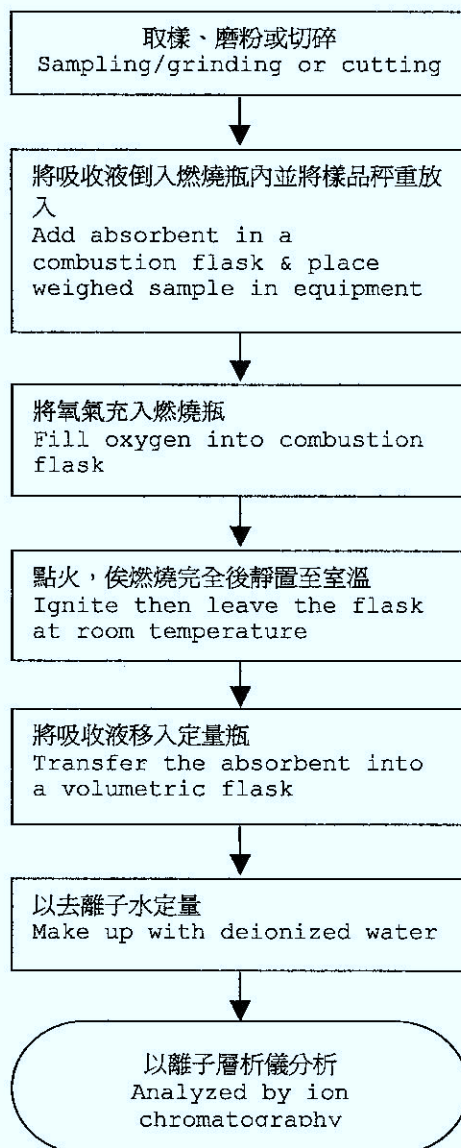
若點測試的結果為陽性反應，則直接判定為含有六價鉻。

Test Conducted

(IV) Measurement Flowchart 測試流程圖:

Test For Halogen Content 鹵素測試流程圖

Reference Method 參考方法: EN 14582



End Of Report

Number : TWNC00141548

Test Conducted

Photo

